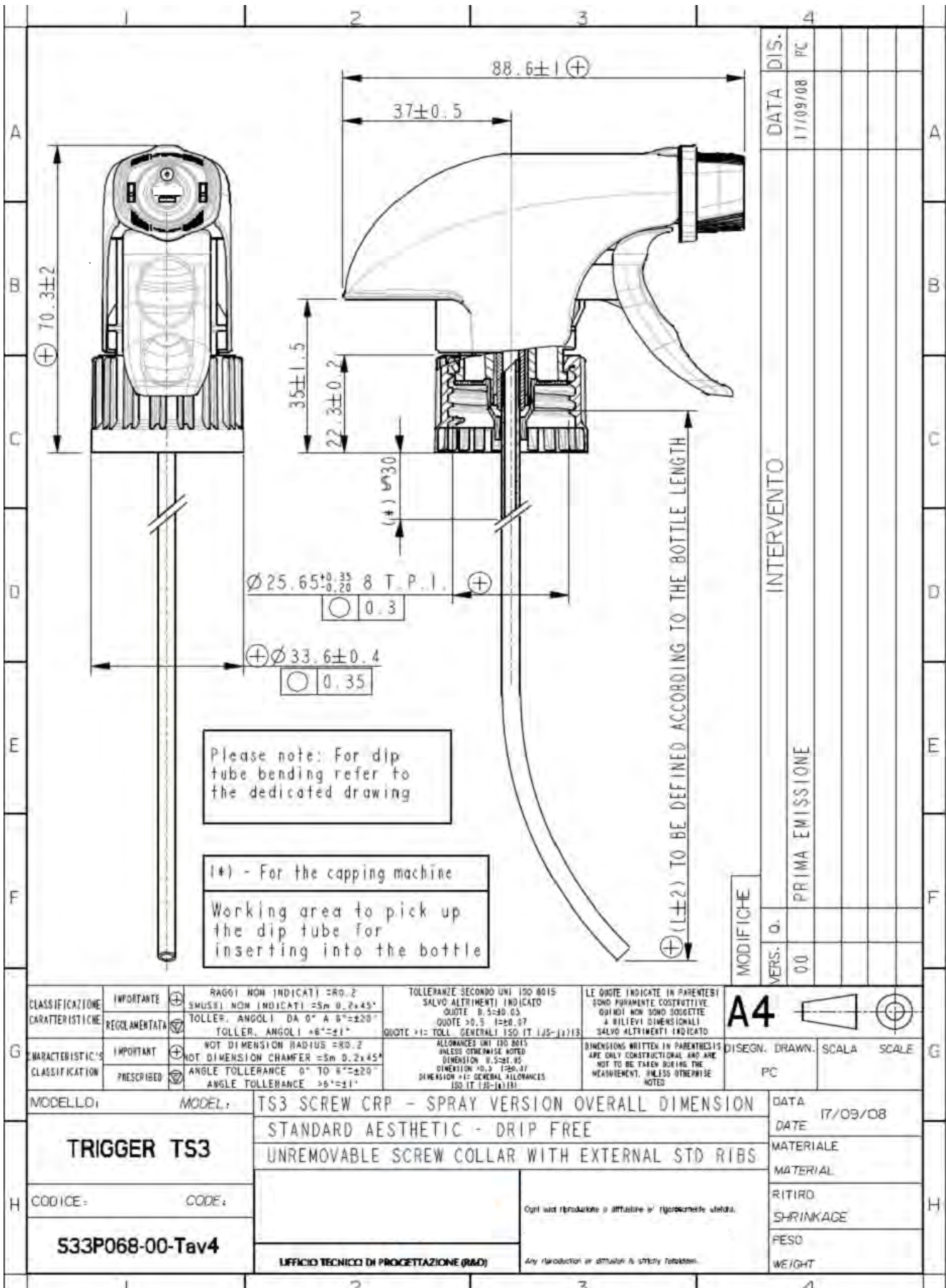


**SUPPLY TECHNICAL SPECIFICATIONS**  
**Trigger Sprayer TS3 CRP Cylindrical Screw**

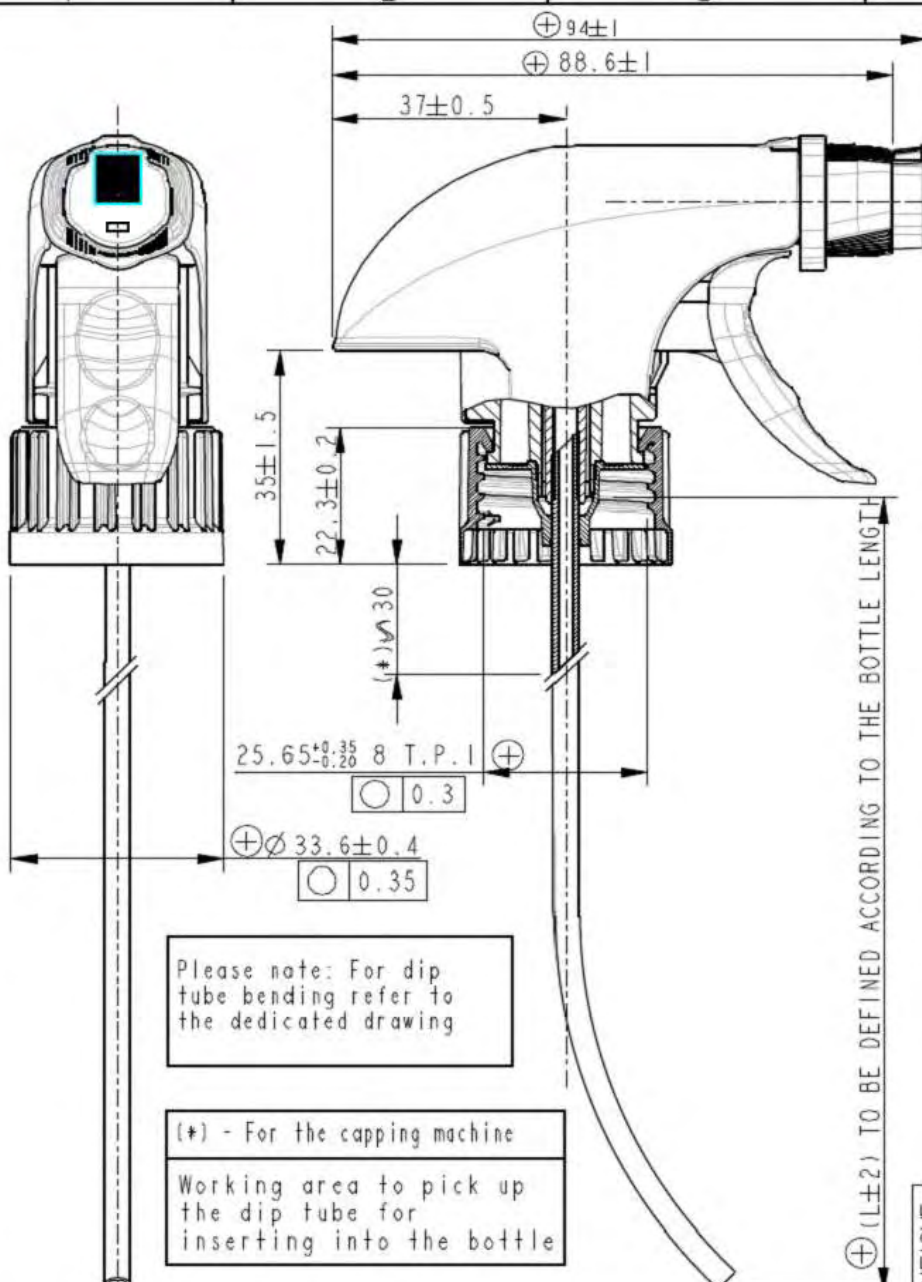
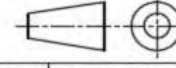
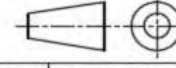
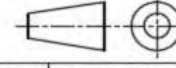
CA FT TS3 27 01 00



# SUPPLY TECHNICAL SPECIFICATIONS

## Trigger Sprayer TS3 CRP Cylindrical Screw

CA FT TS3 27 01 00

A		2		3		4																															
		DATA		DIS.		PC																															
B		17/09/08																																			
C		INTERVENTO																																			
D		(L±2) TO BE DEFINED ACCORDING TO THE BOTTLE LENGTH																																			
E		<p>Please note: For dip tube bending refer to the dedicated drawing</p> <p>(*) - For the capping machine</p> <p>Working area to pick up the dip tube for inserting into the bottle</p>		MODIFICHE		VERS. 00																															
F				PRIMA EMISSIONE																																	
G		<table border="1"> <tr> <td>CLASSIFICAZIONE</td> <td>IMPORTANTE</td> <td>⊕</td> <td>RAGGI NON INDICATI =R0,2</td> <td>TOLLERANZE SECONDO UNI ISO 8015</td> <td>LE QUOTE INDICATE IN PARENTESI SONO PURAMENTE COSTRUTTIVE</td> <td rowspan="2">A4</td> <td rowspan="2">  </td> </tr> <tr> <td>CARATTERISTICHE</td> <td>REGOLAMENTATA</td> <td>⊕</td> <td>SMUSSI NON INDICATI =Sm 0,2x45°</td> <td>SALVO ALTRIMENTI INDICATO</td> <td>QUINDI NON SONO SOGGETTE A RILIEVI DIMENSIONALI</td> </tr> <tr> <td>CHARACTERISTICS</td> <td>IMPORTANT</td> <td>⊕</td> <td>TOLLER. ANGOLI DA 0° A 6° =±20"</td> <td>QUOTE &gt;0,5 I=±0,07</td> <td>A RILIEVI DIMENSIONALI SALVO ALTRIMENTI INDICATO</td> <td>DISEGN. DRAWN.</td> <td>SCALE</td> </tr> <tr> <td>CLASSIFICATION</td> <td>PRESCRIBED</td> <td>⊕</td> <td>NOT DIMENSION CHAMFER =Sm 0,2x45°</td> <td>UNLESS OTHERWISE NOTED</td> <td>MEASUREMENT, UNLESS OTHERWISE NOTED.</td> <td>PC</td> <td>SCALE</td> </tr> </table>		CLASSIFICAZIONE	IMPORTANTE	⊕	RAGGI NON INDICATI =R0,2	TOLLERANZE SECONDO UNI ISO 8015	LE QUOTE INDICATE IN PARENTESI SONO PURAMENTE COSTRUTTIVE	A4		CARATTERISTICHE	REGOLAMENTATA	⊕	SMUSSI NON INDICATI =Sm 0,2x45°	SALVO ALTRIMENTI INDICATO	QUINDI NON SONO SOGGETTE A RILIEVI DIMENSIONALI	CHARACTERISTICS	IMPORTANT	⊕	TOLLER. ANGOLI DA 0° A 6° =±20"	QUOTE >0,5 I=±0,07	A RILIEVI DIMENSIONALI SALVO ALTRIMENTI INDICATO	DISEGN. DRAWN.	SCALE	CLASSIFICATION	PRESCRIBED	⊕	NOT DIMENSION CHAMFER =Sm 0,2x45°	UNLESS OTHERWISE NOTED	MEASUREMENT, UNLESS OTHERWISE NOTED.	PC	SCALE				
CLASSIFICAZIONE	IMPORTANTE	⊕	RAGGI NON INDICATI =R0,2	TOLLERANZE SECONDO UNI ISO 8015	LE QUOTE INDICATE IN PARENTESI SONO PURAMENTE COSTRUTTIVE	A4																															
CARATTERISTICHE	REGOLAMENTATA	⊕	SMUSSI NON INDICATI =Sm 0,2x45°	SALVO ALTRIMENTI INDICATO	QUINDI NON SONO SOGGETTE A RILIEVI DIMENSIONALI																																
CHARACTERISTICS	IMPORTANT	⊕	TOLLER. ANGOLI DA 0° A 6° =±20"	QUOTE >0,5 I=±0,07	A RILIEVI DIMENSIONALI SALVO ALTRIMENTI INDICATO	DISEGN. DRAWN.	SCALE																														
CLASSIFICATION	PRESCRIBED	⊕	NOT DIMENSION CHAMFER =Sm 0,2x45°	UNLESS OTHERWISE NOTED	MEASUREMENT, UNLESS OTHERWISE NOTED.	PC	SCALE																														
H		MODELLO: MODEL: TS3 SCREW CRP - FOAM V30 VERSION OVERALL DIMENSION TRIGGER TS3 STANDARD AESTHETIC - DRIP FREE CODICE: CODE: UNREMOVABLE SCREW COLLAR WITH EXTERNAL STD RIBS <b>S33P068-00-Tav2</b>		DATA DATE 17/09/08 MATERIALE MATERIAL RITIRO SHRINKAGE PESO WEIGHT		UFFICIO TECNICO DI PROGETTAZIONE (R&D) Any reproduction or diffusion is strictly forbidden.																															
		2		3		4																															

**SUPPLY TECHNICAL SPECIFICATIONS**  
**Trigger Sprayer TS3 CRP Cylindrical Screw**

CA FT TS3 27 01 00

		2		3		4																						
A	<div style="border: 1px solid black; padding: 5px; margin: 10px auto; width: fit-content;"> <p>L = DIP TUBE LENGTH (Defined by product code) A = 45% L</p> </div>						DATA	DIS.	6L																			
B							INTERVENTO																					
C																												
D																												
E																												
F																												
						PRIMA EMISSIONE																						
						MODIFICHE		VERS. 0.	02																			
<table border="1"> <tr> <td>CLASSIFICAZIONE CARATTERISTICHE</td> <td>IMPORTANTE</td> <td>RAGGI NON INDICATI = R0.2 SMUSSI NON INDICATI = Sm 0.2x45°</td> <td>TOLLERANZE SECONDO UNI ISO 8015 SALVO ALTRIMENTI INDICATO QUOTE &gt; 0.5 1=±0.05 QUOTE &gt; 0.5 1=±0.07 QUOTE &gt; 1= TOLL. GENERALI ISO IT 1:JS-j±1/3</td> <td>LE QUOTE INDICATE IN PARENTESI SONO PURAMENTE COSTRUTTIVE QUINDI NON SONO SOGGETTE A RILIEVI DIMENSIONALI SALVO ALTRIMENTI INDICATO.</td> </tr> <tr> <td>CHARACTERISTIC'S CLASSIFICATION</td> <td>IMPORTANT</td> <td>NOT DIMENSION RADIUS = R0.2 NOT DIMENSION CHAMFER = Sm 0.2x45°</td> <td>ALLOWANCES UNI ISO 8015 UNLESS OTHERWISE NOTED DIMENSION &gt; 0.5 1=±0.05 DIMENSION &gt; 0.5 1=±0.07 DIMENSION &gt; 1= GENERAL ALLOWANCES ISO IT 1:JS-j±1/3</td> <td>DIMENSIONS WRITTEN IN PARENTESIS ARE ONLY CONSTRUCTIONAL AND ARE NOT TO BE TAKEN DURING THE MEASUREMENT UNLESS OTHERWISE NOTED.</td> </tr> </table>		CLASSIFICAZIONE CARATTERISTICHE	IMPORTANTE	RAGGI NON INDICATI = R0.2 SMUSSI NON INDICATI = Sm 0.2x45°	TOLLERANZE SECONDO UNI ISO 8015 SALVO ALTRIMENTI INDICATO QUOTE > 0.5 1=±0.05 QUOTE > 0.5 1=±0.07 QUOTE > 1= TOLL. GENERALI ISO IT 1:JS-j±1/3	LE QUOTE INDICATE IN PARENTESI SONO PURAMENTE COSTRUTTIVE QUINDI NON SONO SOGGETTE A RILIEVI DIMENSIONALI SALVO ALTRIMENTI INDICATO.	CHARACTERISTIC'S CLASSIFICATION	IMPORTANT	NOT DIMENSION RADIUS = R0.2 NOT DIMENSION CHAMFER = Sm 0.2x45°	ALLOWANCES UNI ISO 8015 UNLESS OTHERWISE NOTED DIMENSION > 0.5 1=±0.05 DIMENSION > 0.5 1=±0.07 DIMENSION > 1= GENERAL ALLOWANCES ISO IT 1:JS-j±1/3	DIMENSIONS WRITTEN IN PARENTESIS ARE ONLY CONSTRUCTIONAL AND ARE NOT TO BE TAKEN DURING THE MEASUREMENT UNLESS OTHERWISE NOTED.	<table border="1"> <tr> <td>REGOLAMENTATA</td> <td>TOLLER. ANGOLI DA 0° A 6° = ±20° TOLLER. ANGOLI &gt; 6° = ±1°</td> </tr> <tr> <td>PRESCRIBED</td> <td>ANGLE TOLERANCE 0° TO 6° = ±20° ANGLE TOLERANCE &gt; 6° = ±1°</td> </tr> </table>		REGOLAMENTATA	TOLLER. ANGOLI DA 0° A 6° = ±20° TOLLER. ANGOLI > 6° = ±1°	PRESCRIBED	ANGLE TOLERANCE 0° TO 6° = ±20° ANGLE TOLERANCE > 6° = ±1°	<table border="1"> <tr> <td>A4</td> <td></td> <td></td> </tr> <tr> <td>DESIGN. DRAWN. SCALE</td> <td>SCALE</td> <td></td> </tr> <tr> <td>QL</td> <td></td> <td></td> </tr> </table>		A4			DESIGN. DRAWN. SCALE	SCALE		QL		
CLASSIFICAZIONE CARATTERISTICHE	IMPORTANTE	RAGGI NON INDICATI = R0.2 SMUSSI NON INDICATI = Sm 0.2x45°	TOLLERANZE SECONDO UNI ISO 8015 SALVO ALTRIMENTI INDICATO QUOTE > 0.5 1=±0.05 QUOTE > 0.5 1=±0.07 QUOTE > 1= TOLL. GENERALI ISO IT 1:JS-j±1/3	LE QUOTE INDICATE IN PARENTESI SONO PURAMENTE COSTRUTTIVE QUINDI NON SONO SOGGETTE A RILIEVI DIMENSIONALI SALVO ALTRIMENTI INDICATO.																								
CHARACTERISTIC'S CLASSIFICATION	IMPORTANT	NOT DIMENSION RADIUS = R0.2 NOT DIMENSION CHAMFER = Sm 0.2x45°	ALLOWANCES UNI ISO 8015 UNLESS OTHERWISE NOTED DIMENSION > 0.5 1=±0.05 DIMENSION > 0.5 1=±0.07 DIMENSION > 1= GENERAL ALLOWANCES ISO IT 1:JS-j±1/3	DIMENSIONS WRITTEN IN PARENTESIS ARE ONLY CONSTRUCTIONAL AND ARE NOT TO BE TAKEN DURING THE MEASUREMENT UNLESS OTHERWISE NOTED.																								
REGOLAMENTATA	TOLLER. ANGOLI DA 0° A 6° = ±20° TOLLER. ANGOLI > 6° = ±1°																											
PRESCRIBED	ANGLE TOLERANCE 0° TO 6° = ±20° ANGLE TOLERANCE > 6° = ±1°																											
A4																												
DESIGN. DRAWN. SCALE	SCALE																											
QL																												
MODELLO: MODEL:		TS3 SCREW CRP				DATA																						
TRIGGER TS3		DIP TUBE BENDING LIMITS				DATE																						
CODICE: CODE:						MATERIALE																						
S31R044A-02-Tav3						MATERIAL																						
		UFFICIO TECNICO DI PROGETTAZIONE (R&D)				RITIRO																						
		Any reproduction or diffusion is strictly forbidden.				SHRINKAGE																						
						PESO																						
						WEIGHT																						
		2		3		4																						



**SUPPLY TECHNICAL SPECIFICATIONS**  
**Trigger Sprayer TS3 CRP Cylindrical Screw**

CA FT TS3 27 01 00

		2	3	4											
A	<b>NOZZLE + FOAM DEVICE</b> 		<b>NOZZLE</b>  <b>SPRAY VERSION</b>	<b>DATA DIS.</b> GL 20/04/06	A										
B	 <b>MESH</b>				B										
C	<b>FOAM V20 DEVICE</b>	<b>FOAM V30 DEVICE</b>	<b>FOAM DEVICE</b>		C										
D	 <b>BACK SUPPORT</b> <b>BACK SUPPORT OPTIONAL</b>														
E															
F															
G	<table border="1"> <tr> <td>CLASSIFICAZIONE CARATTERISTICHE</td> <td> <b>IMPORTANTE</b>            REGOLAMENTATA         </td> <td>           RAGGI NON INDICATI = R0,2            SMISURI NON INDICATI CON 0,2x45°            TOLLER. ANGOLI DA 0° A 6° = ±20"            TOLLER. ANGOLI &gt; 6° = ±1°         </td> <td>           TOLLERANZE SECONDO UNI ISO 8013            SALVO ALTRIMENTI INDICATI            QUOTE 0,5-60,35            QUOTE &gt; 6,3 1-60,07            QUOTE 1:1 TOLL. GENERALI ISO IT 132-15112         </td> <td>           LE QUOTE INDICATE IN PARENTESI            SONO PURAMENTE SUGGERITIVE            QUINDI NON SONO SOGGETTE            A RILIEVI DIMENSIONALI            SALVO ALTRIMENTI INDICATI         </td> </tr> <tr> <td>SHARPERISTIC CLASSIFICATION</td> <td> <b>IMPORTANT</b>            PRESCRIBED         </td> <td>           NOT DIMENSION RADIUS CR0 2            NOT DIMENSION CHAMFER CR0 0,2x45°            ANGLE TOLERANCE 0° TO 6° = ±20"            ANGLE TOLERANCE &gt; 6° = ±1°         </td> <td>           ALLOWANCES UNITS ISO 8013            UNLESS OTHERWISE NOTED            DIMENSIONS 0,5 1-60,35            DIMENSIONS &gt; 6,3 1-60,07            DIMENSION 1:1 GENERAL ALLOWANCES            ISO IT 132-15112         </td> <td>           DIMENSIONS WRITTEN IN PARENTHESES            ARE ONLY CONSTRUCTIONAL AND ARE            NOT TO BE TAKEN DURING THE            MEASUREMENT UNLESS OTHERWISE            NOTED         </td> </tr> </table>			CLASSIFICAZIONE CARATTERISTICHE	<b>IMPORTANTE</b> REGOLAMENTATA	RAGGI NON INDICATI = R0,2 SMISURI NON INDICATI CON 0,2x45° TOLLER. ANGOLI DA 0° A 6° = ±20" TOLLER. ANGOLI > 6° = ±1°	TOLLERANZE SECONDO UNI ISO 8013 SALVO ALTRIMENTI INDICATI QUOTE 0,5-60,35 QUOTE > 6,3 1-60,07 QUOTE 1:1 TOLL. GENERALI ISO IT 132-15112	LE QUOTE INDICATE IN PARENTESI SONO PURAMENTE SUGGERITIVE QUINDI NON SONO SOGGETTE A RILIEVI DIMENSIONALI SALVO ALTRIMENTI INDICATI	SHARPERISTIC CLASSIFICATION	<b>IMPORTANT</b> PRESCRIBED	NOT DIMENSION RADIUS CR0 2 NOT DIMENSION CHAMFER CR0 0,2x45° ANGLE TOLERANCE 0° TO 6° = ±20" ANGLE TOLERANCE > 6° = ±1°	ALLOWANCES UNITS ISO 8013 UNLESS OTHERWISE NOTED DIMENSIONS 0,5 1-60,35 DIMENSIONS > 6,3 1-60,07 DIMENSION 1:1 GENERAL ALLOWANCES ISO IT 132-15112	DIMENSIONS WRITTEN IN PARENTHESES ARE ONLY CONSTRUCTIONAL AND ARE NOT TO BE TAKEN DURING THE MEASUREMENT UNLESS OTHERWISE NOTED	<b>MODIFICHE</b> VERS. Q. 00 <b>INTERVENTO</b> PRIMA EMISSIONE	
CLASSIFICAZIONE CARATTERISTICHE	<b>IMPORTANTE</b> REGOLAMENTATA	RAGGI NON INDICATI = R0,2 SMISURI NON INDICATI CON 0,2x45° TOLLER. ANGOLI DA 0° A 6° = ±20" TOLLER. ANGOLI > 6° = ±1°	TOLLERANZE SECONDO UNI ISO 8013 SALVO ALTRIMENTI INDICATI QUOTE 0,5-60,35 QUOTE > 6,3 1-60,07 QUOTE 1:1 TOLL. GENERALI ISO IT 132-15112	LE QUOTE INDICATE IN PARENTESI SONO PURAMENTE SUGGERITIVE QUINDI NON SONO SOGGETTE A RILIEVI DIMENSIONALI SALVO ALTRIMENTI INDICATI											
SHARPERISTIC CLASSIFICATION	<b>IMPORTANT</b> PRESCRIBED	NOT DIMENSION RADIUS CR0 2 NOT DIMENSION CHAMFER CR0 0,2x45° ANGLE TOLERANCE 0° TO 6° = ±20" ANGLE TOLERANCE > 6° = ±1°	ALLOWANCES UNITS ISO 8013 UNLESS OTHERWISE NOTED DIMENSIONS 0,5 1-60,35 DIMENSIONS > 6,3 1-60,07 DIMENSION 1:1 GENERAL ALLOWANCES ISO IT 132-15112	DIMENSIONS WRITTEN IN PARENTHESES ARE ONLY CONSTRUCTIONAL AND ARE NOT TO BE TAKEN DURING THE MEASUREMENT UNLESS OTHERWISE NOTED											
	<b>MODELLO:</b> MODELLO: <b>OPTIONAL DEVICE</b>		<b>DATA</b> 20/04/06												
	<b>TRIGGER TS3</b>		<b>FOAM DEVICE AND BACK SUPPORT</b>	<b>SCALE</b>											
H	<b>CODICE:</b> CODE:	<b>S3IR062A-00</b>	Ogni suo riproducere o distribuire è espressamente vietato. Any reproduction or distribute is strictly forbidden.	<b>RITIRO</b> SHRINKAGE <b>PESO</b> WEIGHT	H										
		2	3	4											